

We manufacture, supply, install & service overhead doors for any project.

Alloy Overhead Doors are robust & well-engineered overhead doors that lead the market in both affordability and safety. Our combination of galvanized steel panels, polyurethane foam insulation & safety features make them suitable any industrial & commercial application.

Door Panels:

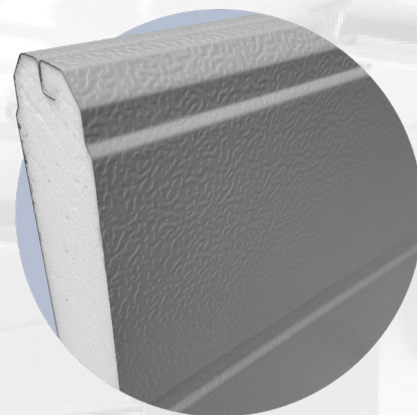
Our doors are made of thickened double-layer galvanized coloured steel panels that are filled with reinforcing supports and polyurethane foam insulation. The quality foam provides heat insulation, sound insulation, and thermal insulation and is suitable for large warehouses and factory doors.

Door Panel Composition:

- Inner layer: Polyurethane foam insulation material.
- Outer layers: 0.45mm thick colour steel plates.
- Steel strips reinforce hinges and other accessories.

Foam Material Density:

- 48K g/m³ + 2K g/m³.



Technical Parameters:

Our doors are constructed of Segmented door panels running on a galvanized track system. Doors are available in various thicknesses (40/50/60/80mm) and include internal and external reinforcements for extra-large doors.

Guide Rails & Hardware:

- Made of 2.0mm thick hot-dip galvanized steel plates.
- Support plates on both sides of the guide rails enhance strength and aesthetics.

Balancing System:

- Utilizes torsion springs to reduce motor load.
- Ensures stable and smooth door opening and closing.

Sealing:

- Both top and bottom seals.
- U-shaped EPDM sealing strips prevent frost and moisture infiltration.
- Grooved sealing strips at joints between door panels.

Wind Load:

- Standard wind load: 400 Newton/m².

Track:

- 2-inch/3-inch C-type galvanized steel track.



Safety Features:

Safety is our number one concern and each door is equipped with an anti-fall device with an optional safety airbag for added assurance. An additional wire rope breakage prevention device will stop the door within 15cm of a breakage.

Spring Safety:

- Torsion spring breakage safety device.
- Fatigue-resistant spring system with a 50,000-cycle service life.

Wire Break Prevention:

- Equipped with wire anti-breaking devices.
- Safety airbags at the bottom of the door.

